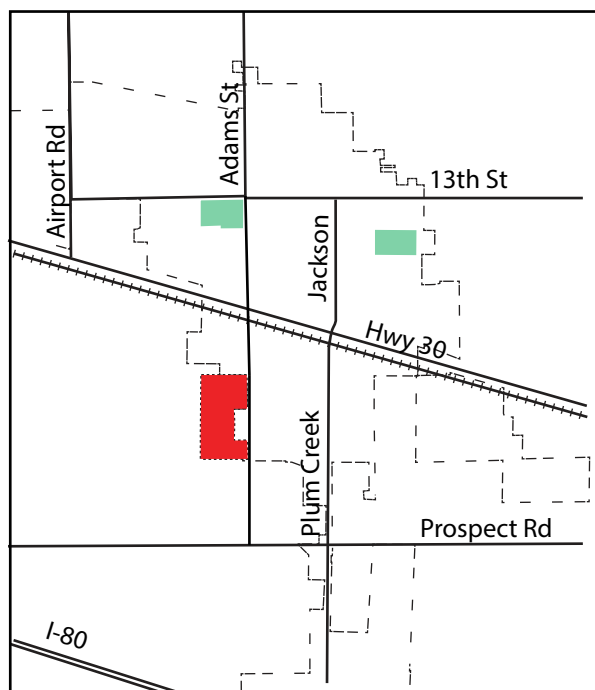


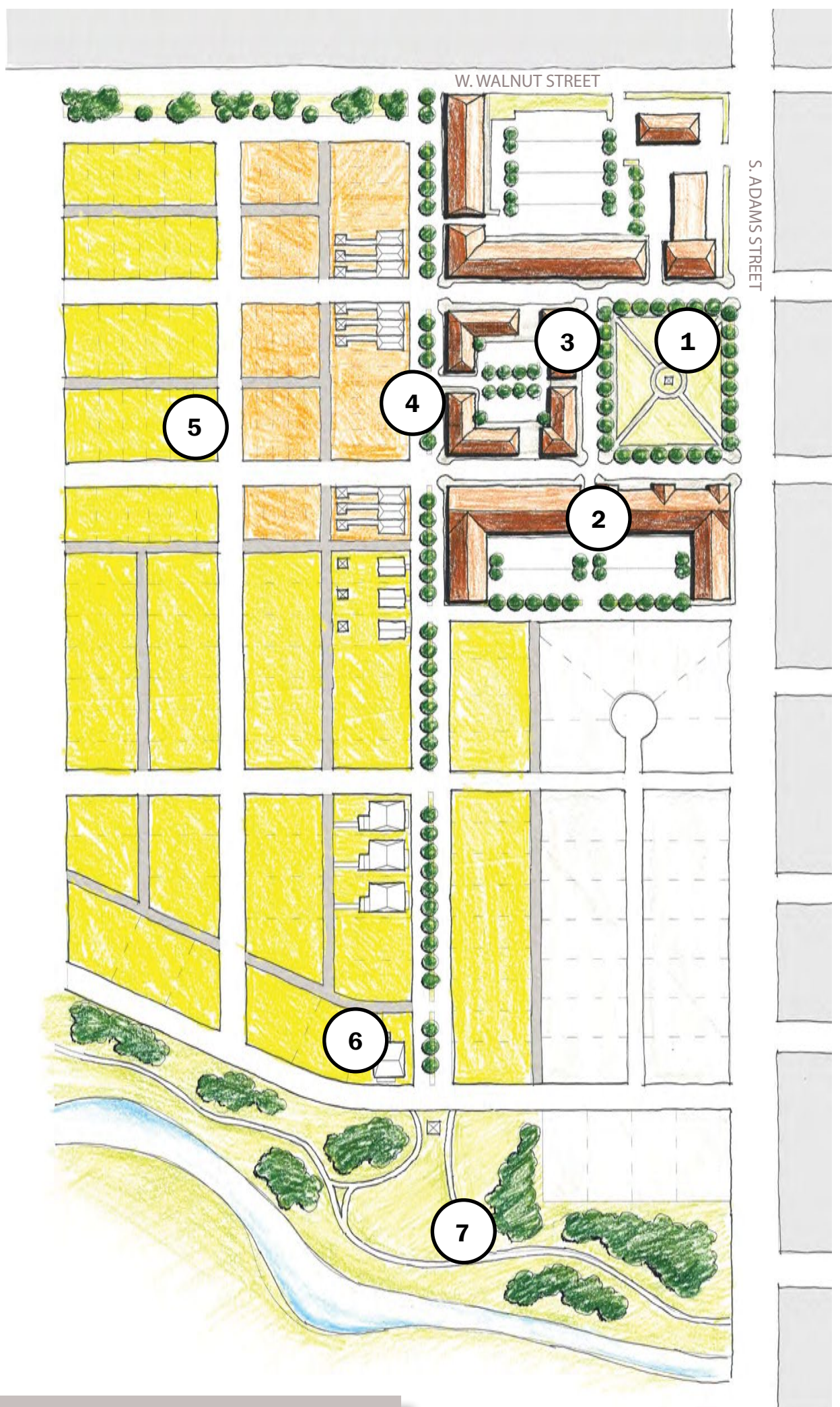
Greenfield Development: Southwest Neighborhood Design Concept

- 1 Neighborhood Square
- 2 Mixed Use Buildings
- 3 Apartments
- 4 Townhomes
- 5 Single Family Houses
- 6 Estate Homes
- 7 Greenway



LOCATION MAP

Figure 32: Southwest Neighborhood Design, Lexington



Southwest Neighborhood Design Concept

A Traditional Neighborhood Development (TND) that implements the ideas of connectivity and walkability is proposed for an undeveloped tract of land in southwest Lexington. Framed by mixed use and apartment buildings, a public neighborhood square anchors the northeast portion of the site. The neighborhood boasts a wealth of housing typologies including townhomes, single family cottages, and larger estate lots, which are connected by a grand boulevard running north to south. The development provides access with streets to the north and east, connecting to the existing urban fabric of Lexington. A small drainage ditch runs adjacent to the southern border of the site, best suited for siting walking trails and open space for the neighborhood.